

series 2000

Series 2000 is a strong, heavy duty, aluminium curtain track ideally suited for hotel and motel applications. The bottom hung nylon carrier system gives years of trouble free use.

Cord draw available as one way stack or centre close, cannot be bent and has a maximum track length of 6m.

Hand draw tracks over 6m will be joined with a sturdy joiner system. Pricing for tracks over 6m is available on request.



series 3000

Series 3000 is a heavy duty commercial aluminium curtain track suitable as light to medium tracking. Cord draw is available as one way stack or centre close. Tracks over 6m will be joined with a joiner system.

Our cord drawn tracks eliminate the need to touch the curtain by hand, therefore, your curtains are kept clean and the cord drawn mechanism minimises wear on the curtains and tearing of stitches.



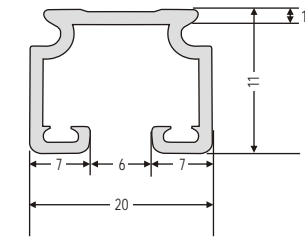
specifications

Quality aluminium tracks preferred by decorators.

track profiles and dimensions



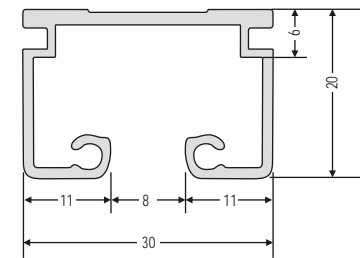
SERIES 2000



White



SERIES 3000



Silver

Windoware Pty Ltd manufactures a large range of Made to Measure tracks.

These high quality tracks are suitable for domestic and commercial applications, giving years of trouble free use even in high traffic areas.

Windoware Made to Measure tracks are made to exact sizes and specifications.

Features include the superior gliding performance that is achieved through the use of a wheeled runner. The design of the runner prevents them from rotating in the track. Our plastic runners and end caps are protected with a UV coating which contributes to their longer lasting life.

safety

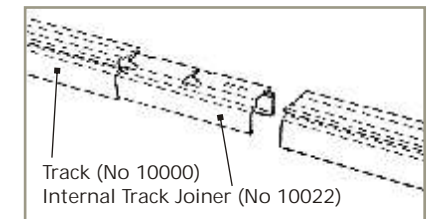


All made to measure corded tracks must be supplied with a cord tidy and warning label. The cord tidy device reduces the hazards of strangulation and entanglement by limiting access to the cord.

Anchor the device with the cord to the wall or floor, so young children cannot pull the cord around their necks.

Always keep the cords out of reach of young children.

how to join track



Insert joiner 10022 into track, push together. Wherever possible fit the support bracket over the joint.

